



This is a digital copy of a book that was preserved for generations on library shelves before it was carefully scanned by Google as part of a project to make the world's books discoverable online.

It has survived long enough for the copyright to expire and the book to enter the public domain. A public domain book is one that was never subject to copyright or whose legal copyright term has expired. Whether a book is in the public domain may vary country to country. Public domain books are our gateways to the past, representing a wealth of history, culture and knowledge that's often difficult to discover.

Marks, notations and other marginalia present in the original volume will appear in this file - a reminder of this book's long journey from the publisher to a library and finally to you.

### **Usage guidelines**

Google is proud to partner with libraries to digitize public domain materials and make them widely accessible. Public domain books belong to the public and we are merely their custodians. Nevertheless, this work is expensive, so in order to keep providing this resource, we have taken steps to prevent abuse by commercial parties, including placing technical restrictions on automated querying.

We also ask that you:

- + *Make non-commercial use of the files* We designed Google Book Search for use by individuals, and we request that you use these files for personal, non-commercial purposes.
- + *Refrain from automated querying* Do not send automated queries of any sort to Google's system: If you are conducting research on machine translation, optical character recognition or other areas where access to a large amount of text is helpful, please contact us. We encourage the use of public domain materials for these purposes and may be able to help.
- + *Maintain attribution* The Google "watermark" you see on each file is essential for informing people about this project and helping them find additional materials through Google Book Search. Please do not remove it.
- + *Keep it legal* Whatever your use, remember that you are responsible for ensuring that what you are doing is legal. Do not assume that just because we believe a book is in the public domain for users in the United States, that the work is also in the public domain for users in other countries. Whether a book is still in copyright varies from country to country, and we can't offer guidance on whether any specific use of any specific book is allowed. Please do not assume that a book's appearance in Google Book Search means it can be used in any manner anywhere in the world. Copyright infringement liability can be quite severe.

### **About Google Book Search**

Google's mission is to organize the world's information and to make it universally accessible and useful. Google Book Search helps readers discover the world's books while helping authors and publishers reach new audiences. You can search through the full text of this book on the web at <http://books.google.com/>

NE

2195

.W58

G7

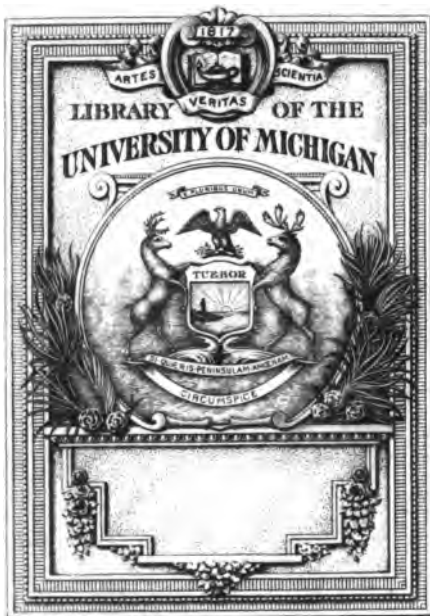
A 1,014,285

333

*ETCHINGS*

*BY*

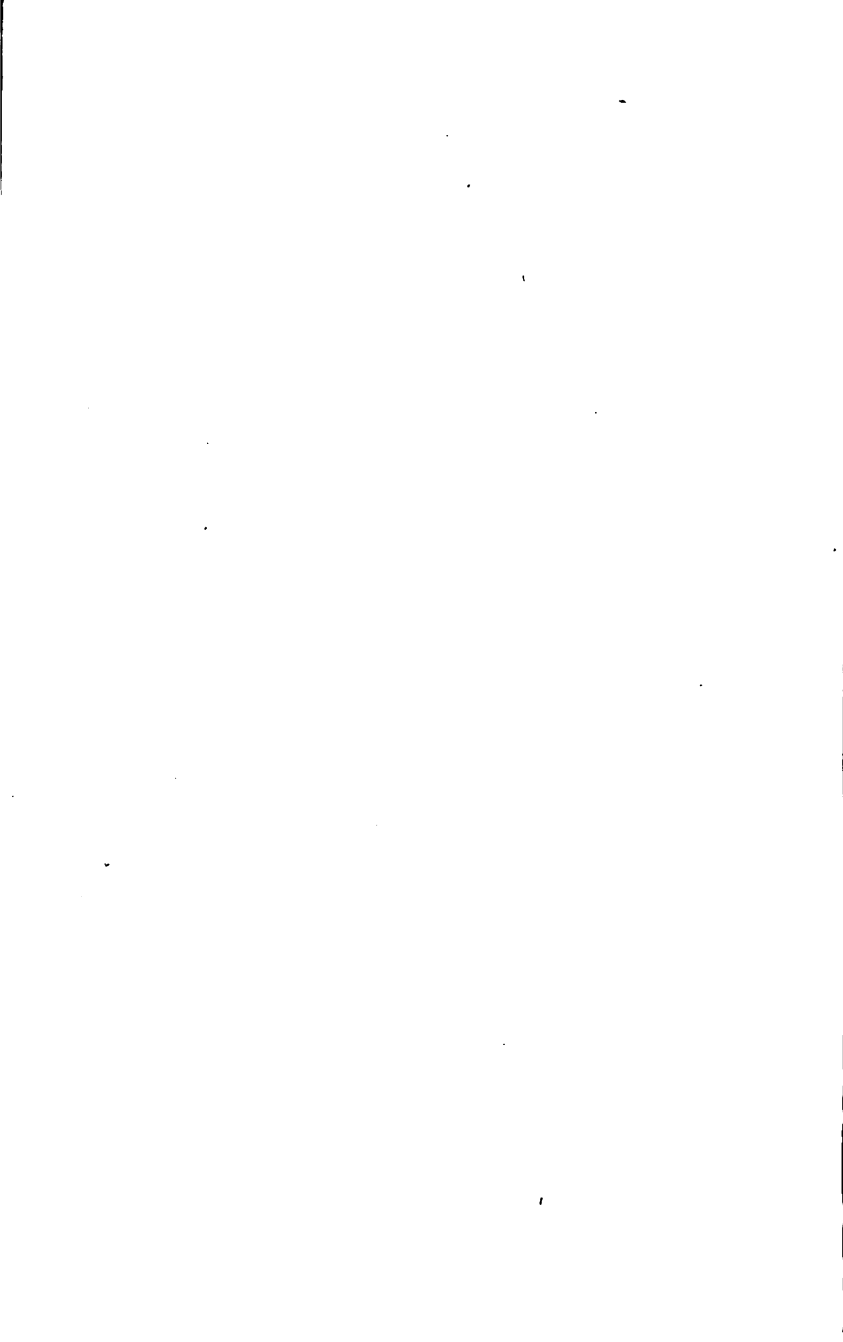
*WHISTLER*



THE GIFT OF  
**Dr. Randolph G. Adams**







333

ETCHINGS BY WHISTLER

CARSON & NICOL, LTD., PRINTERS, GLASGOW.



Little Arthur  
(3 $\frac{3}{8}$ " x 2 $\frac{1}{2}$ " )

(K9 II. W13)



# ETCHINGS

BY

WHISTLER

*SIXTY PHOTOGRAPHS FROM  
ORIGINAL PRINTS*

GOWANS & GRAY, LTD.  
5 ROBERT STREET, ADELPHI, LONDON, W.C.  
58 CADOGAN STREET, GLASGOW

1915





NT  
2195  
-W152  
57

6.11  
H. K. I. Adams  
1873-1934

*THE numbers preceded by "K" refer to Mr. Kennedy's catalogue of Whistler's etchings, the little Roman numerals giving the "state" of each, when more than one state is known; the numbers preceded by "W" are those of Mr. Wedmore's catalogue. The sizes of the original etchings are given in inches from Mr. Kennedy's catalogue.*



Annie  
(4½" × 3½")

(K10 v. W15)



La Mère Gerard  
(4½" × 3½")

(KII.v. W9)





*Imp. Del. par S. Jacques. 1711*

Fumette  
(61" x 41")

(K13 iv. W18)



La Rétameuse  
(4 1/8" x 3 1/2")

(K141. W5)





En plein Soleil  
(31" x 51")

(K15 r. W6)



Liverdun  
(4 1/2" x 6")

(K16n, W4)







The Unsafe Tenement  
(61' x 83')

(K.17iv. W7)



La Vieille aux Loques  
(8½" × 5¼")

(K21 m. W14)





La Marchande de Moutarde (K22v. W16)  
(6½" × 3½")



Reading in Bed  
(41" x 31")

(K28 II. W29)



Seymour, seated (A little boy)  
(5½" × 3½")

(K29 u. W22)



Annie, seated  
(51" x 31")

(K30 II. W24)





Seymour standing under a Tree  
(5 7/8" x 3 1/2")

(K31 n. W23)



Reading by Lamplight  
(6 $\frac{3}{8}$ "  $\times$  4 $\frac{1}{8}$ " )

(K32 II. W25)







Seymour standing under a Tree  
(57 $\frac{1}{2}$ " x 34")

(K31 II. W23)



Reading by Lamplight  
(6½" x 4½")

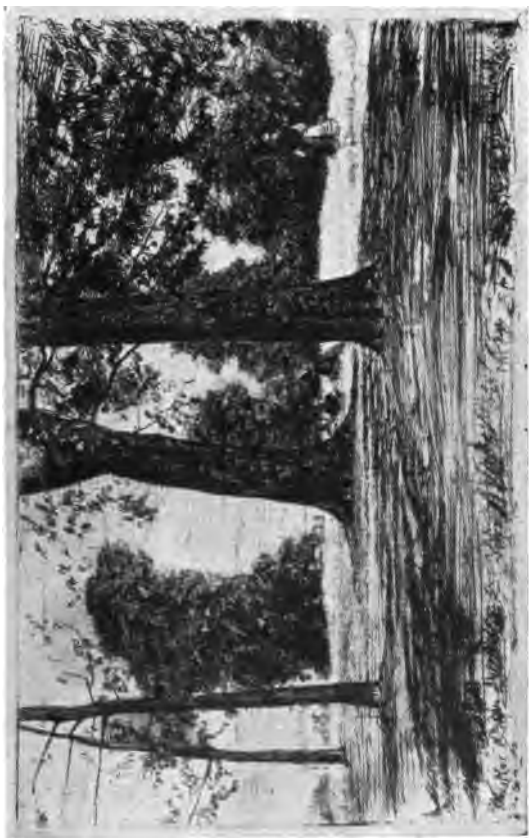
(K32 II. W25)





The Music-Room  
(51" x 81 $\frac{1}{8}$ ")

(K33 II. W26)



(K35 u. W33)

Greenwich Park  
(418 x 77)





Landscape with the Horse  
(5" x 7 $\frac{1}{4}$ ")

(K 36 II. W 46)



(K3 n. W34)

Nursemaid and Child  
(34" x 54")





Thames Warehouses  
(3' x 8')

(K 38 II. W 35)



Old Westminster Bridge  
(28" x 71 1/2")

(K30 in. W36)

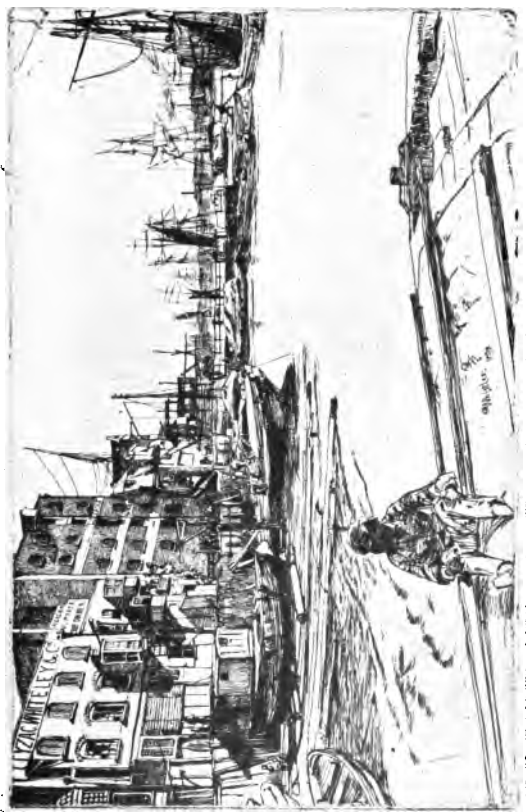






Limehouse  
(5" x 7 1/2")

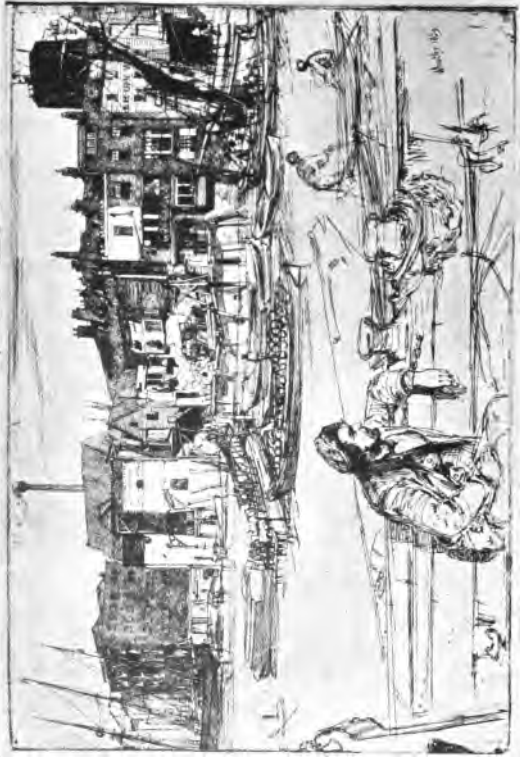
(K40 II. W37)



Eagle Wharf (Tyzac, Whiteley & Co.)  
(51" x 83")

(K41 W39)





Black Lion Wharf  
(51" x 87")

(K42 u. W40)



(K43 in. W41)

The Pool  
(51" x 81")





Thames Police  
(57' x 87')

(K44 n. W42)



Longshoremen  
(58" x 81")

(K45 W43)



The Lime-Burner  
(9½" x 6½")

(K46 n. W44)



(K47 v.iii. W45)

Billingsgate  
(57" x 88")







Bibi Valentin  
(6" x 8 1/2")

(K 50 II. W 28)



Bibi Lalouette  
(9" x 6")

(K51 II. W30)





Becquet  
(10" x 7½")

(K52 iv. W48)



Drouet  
(8 $\frac{1}{2}$ " x 6")

(K55 II. W53)





Fumette, standing  
(13½" × 8½")

(K56 II. W50)



Arthur Haden  
(8½" x 6")

(K61 n. W47)





Annie Haden  
(132" x 88")

(K62 m. W57)



Mr. Mann  
(8½" x 6")

(K63 II. W58)







Axenfeld  
(8½" x 5½")

(K64 u. W61)



(K68 m. W63)

The Forge  
(7 $\frac{1}{2}$ " x 12 $\frac{1}{2}$ " )





Vauxhall Bridge  
(23<sup>2</sup> x 41<sup>7</sup>)

(K70 n. W66)



(K71 n. W67)

Millbank  
(4' x 5')





(K74 v. W72)

The Little Pool  
(4' x 4 1/2')



Early Morning, Battersea  
(4 1/2" x 6")

(K75 W70)





Old Hungerford Bridge  
(58' x 837)

(K76 m. W80)



(K91v. W82)

Amsterdam, from the Tolhuis  
(518" x 814")

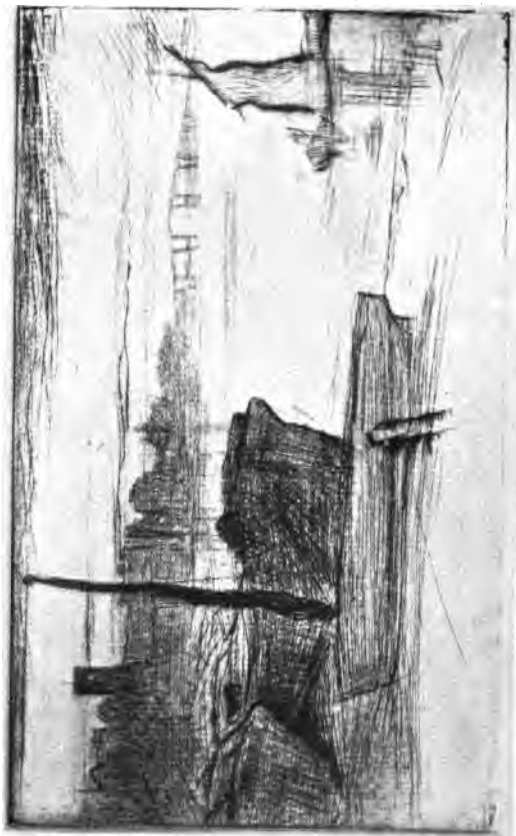






Weary  
(7½" x 5½")

(K92 на. W83)



Chelsea Bridge and Church  
(4" x 6")

(K95 v. W85)





St. James's Street  
(10 $\frac{1}{2}$ " x 5 $\frac{1}{8}$ " )

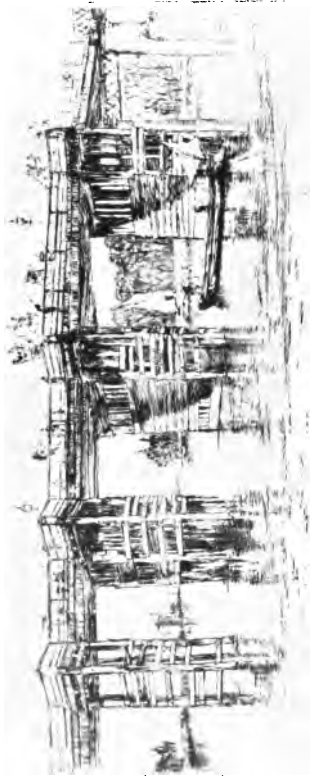
(K169iv. W140)



The "Adam and Eve," Old Chelsea  
(6½" x 11½")

(K175 n. W144)





Old Putney Bridge  
(27' x 114')

(K178 m. W145)



(K179 r. W146)

The Little Putney, No. 1  
(5 $\frac{1}{8}$ " x 8 $\frac{1}{4}$ " )



Fulham  
(5 1/2" x 8")

(K182 II. W148)

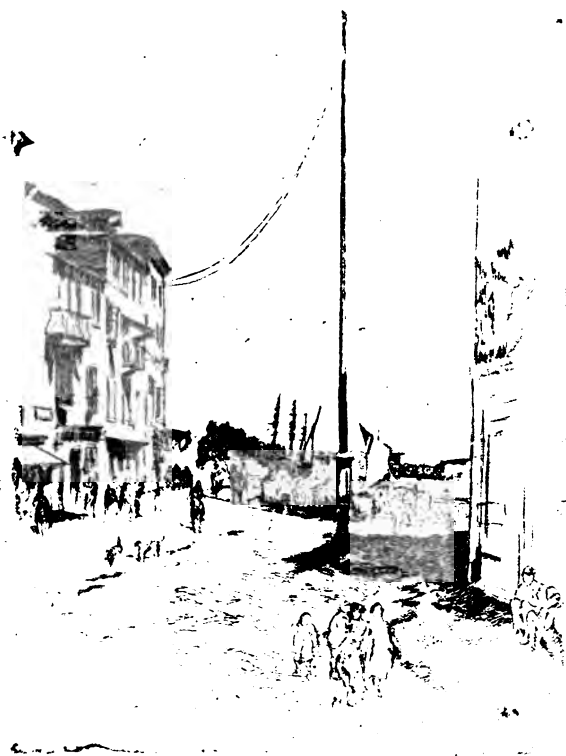


(K183 W149)

Little Venice  
(71" x 101")







The Little Mast  
(10½" x 7½")

(K1851. W151)



(K187 n. W153)

The Palaces  
(97' x 148')





The Doorway  
(12½" x 8")

(K188 m. W154)



The Piazzetta  
(10" x 7½")

(K189m. W155)





The Doorway  
(11½" × 8")

(K188 m. W154)



The Piazzetta  
(10" x 7 1/2")

(K189m. W155)





The Traghetto  
(9 1/2" x 12")



(K192 n. W157)

The Riva, No. 1  
(71" x 111")





